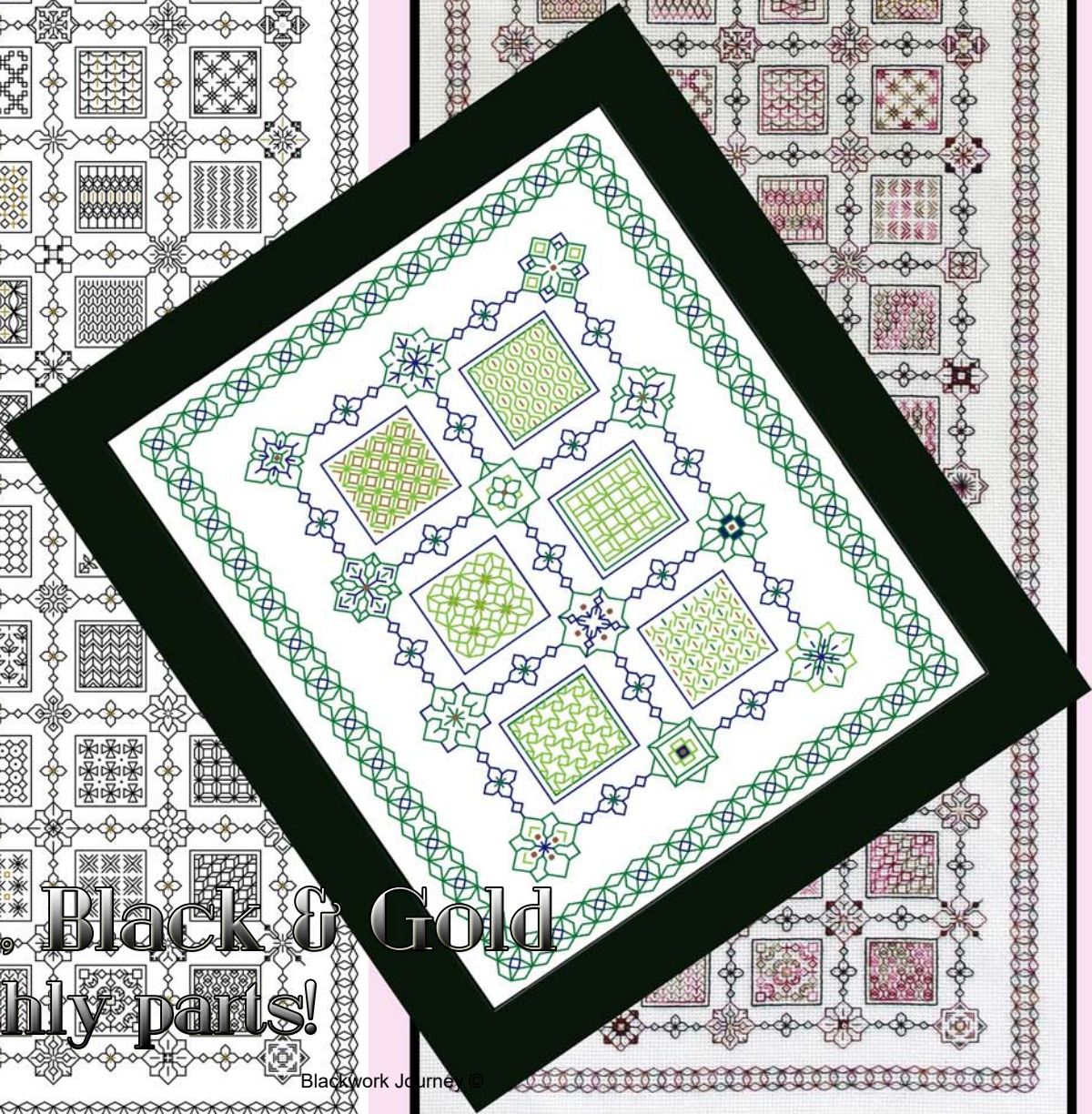
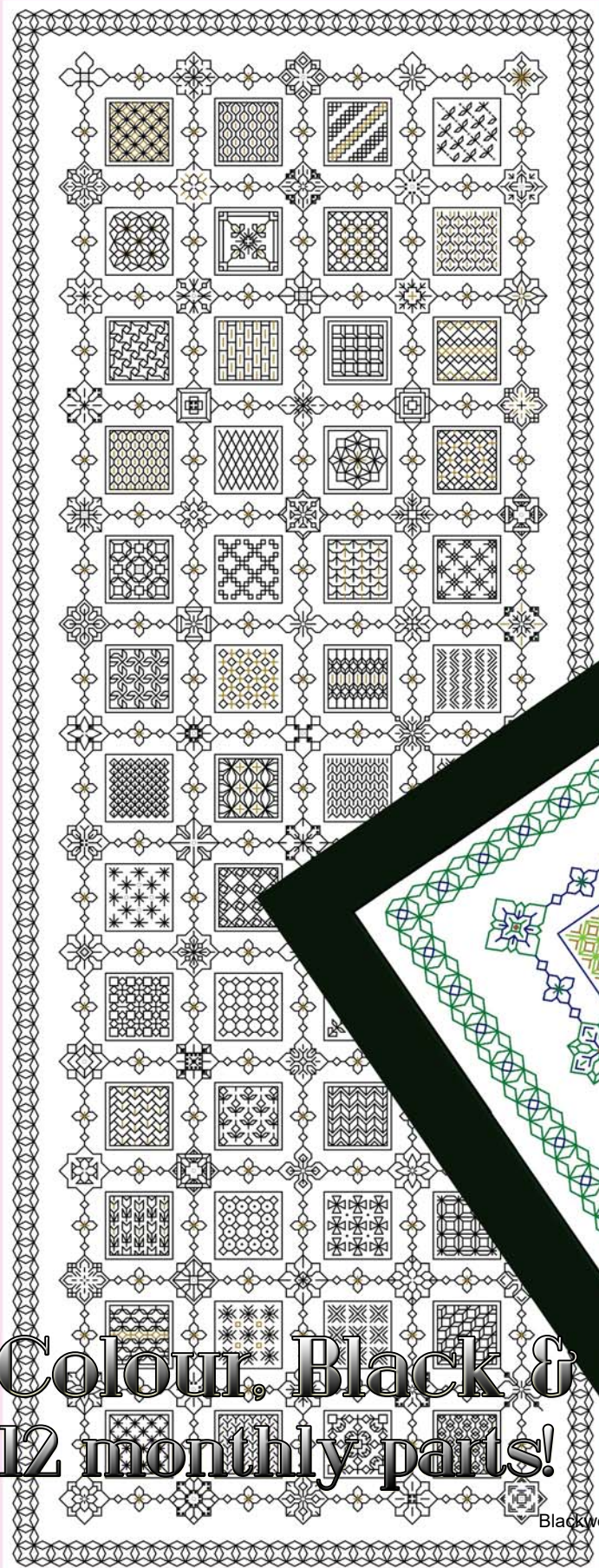
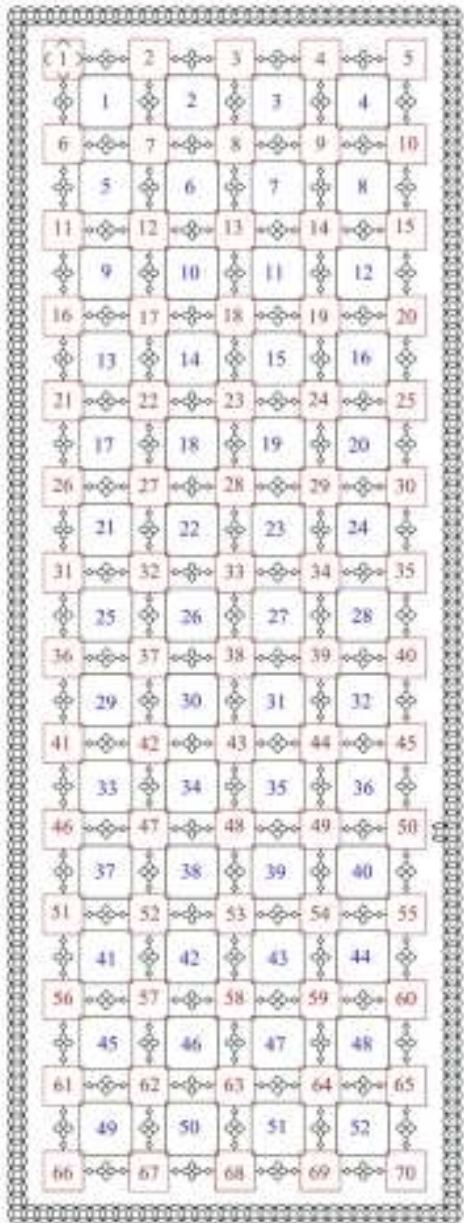


'TINY TREASURES'

Rectangle - Part 4



Colour, Black & Gold
12 monthly parts!



Tiny Treasures Rectangle Design Part 4 – Colour and Black and Gold

Rectangular design suitable for framing or a runner. This design is less complicated than the square design.

Design area: 9.86 x 26.43 inches
Stitches: 138 x 370

Material:

Zweigart 28 count evenweave or 14 count Aida,
15 x 33 inches

25 count Lugana Material size: 17 x 35 inches

70 Flower motifs

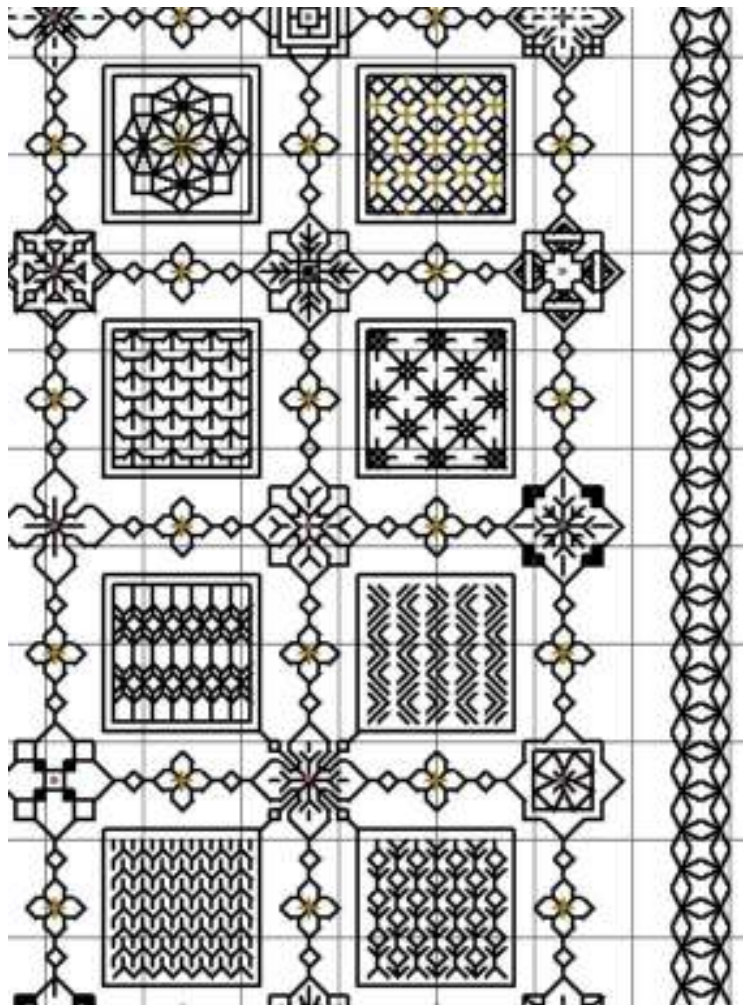
52 Pattern blocks

1 border and 120 mini links

Total: 243 Tiny Treasures

Part 4 is underneath Part 2

Threads: Information about the threads required in on the Keys attached to the back of Part 1 and also in FR0159 Introduction.



Numbered rectangular layout

Stitches used:

Back stitch, one strand of floss

Cross stitch two strands of floss

Evenweave: stitches are worked over 2 threads unless the pattern indicates otherwise.

Cross stitch: stitches are worked over one block unless the pattern indicates otherwise.

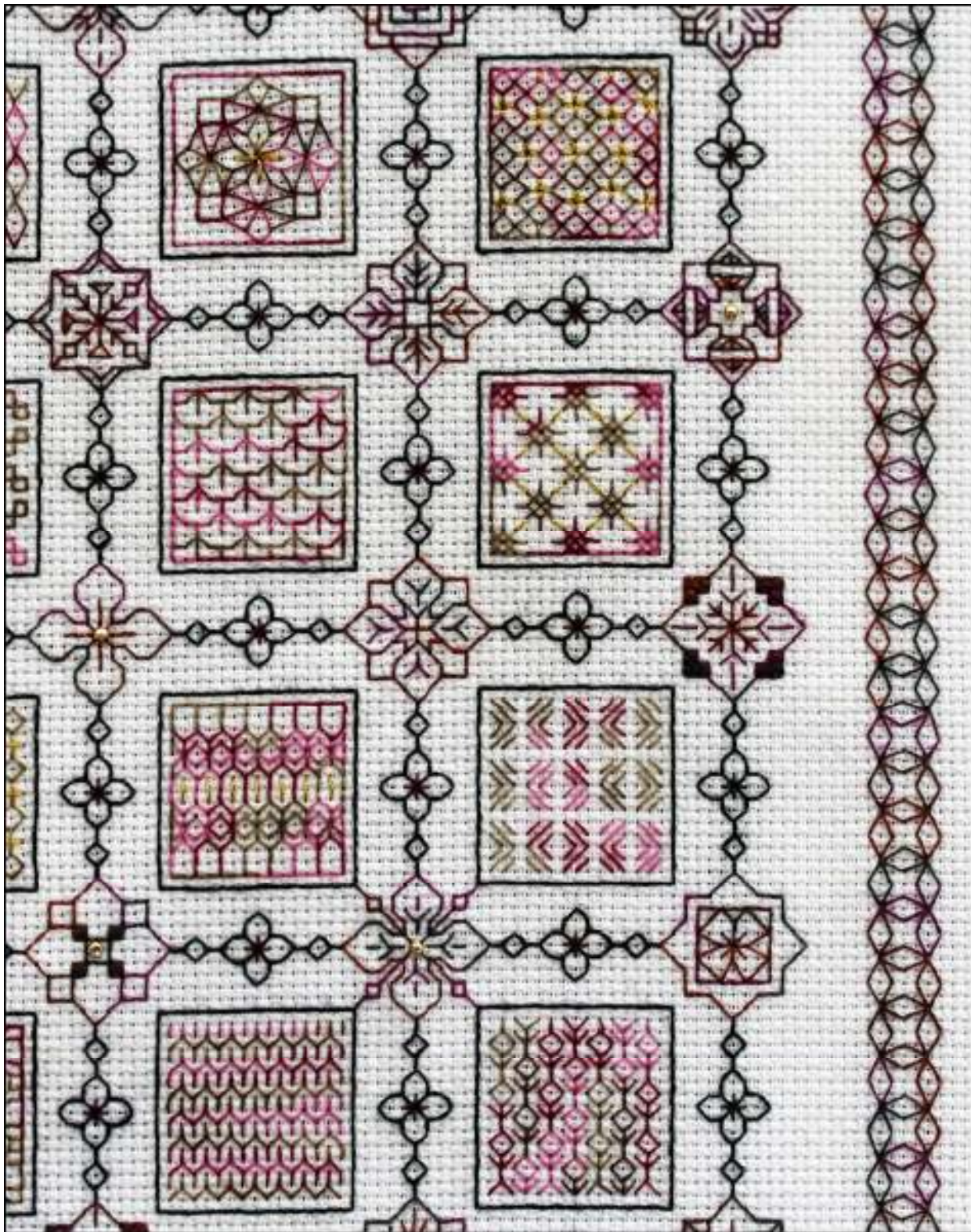
Work Rectangular Design as follows:

Complete any unfinished blocks from Part 2.

Continue the border using one strand of floss.

Add beads after the whole embroidery has been completed.

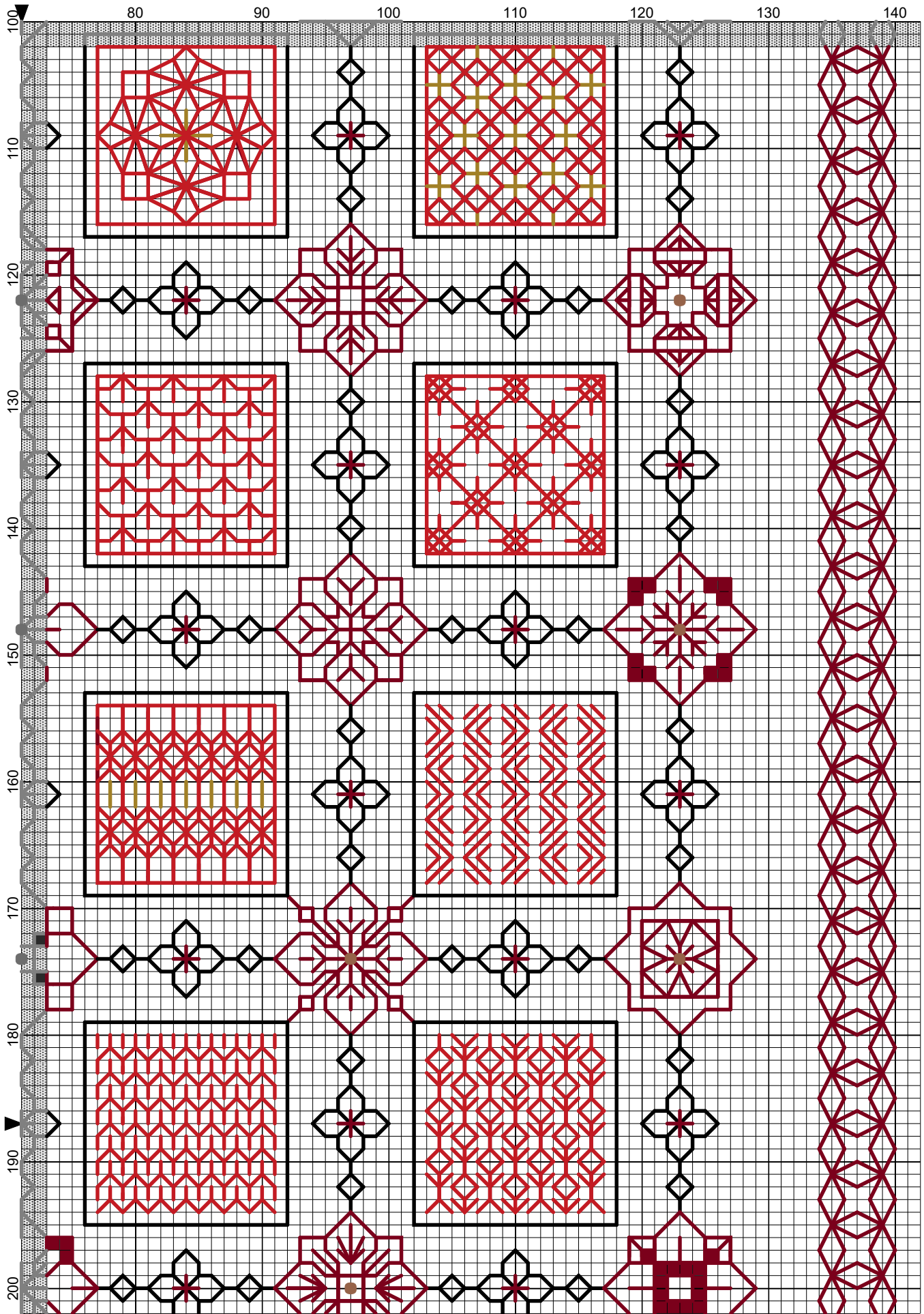
Part 4 Black and Gold chart



Extract from Part 4 Rectangle worked in DMC Coloris on 14 count Aida

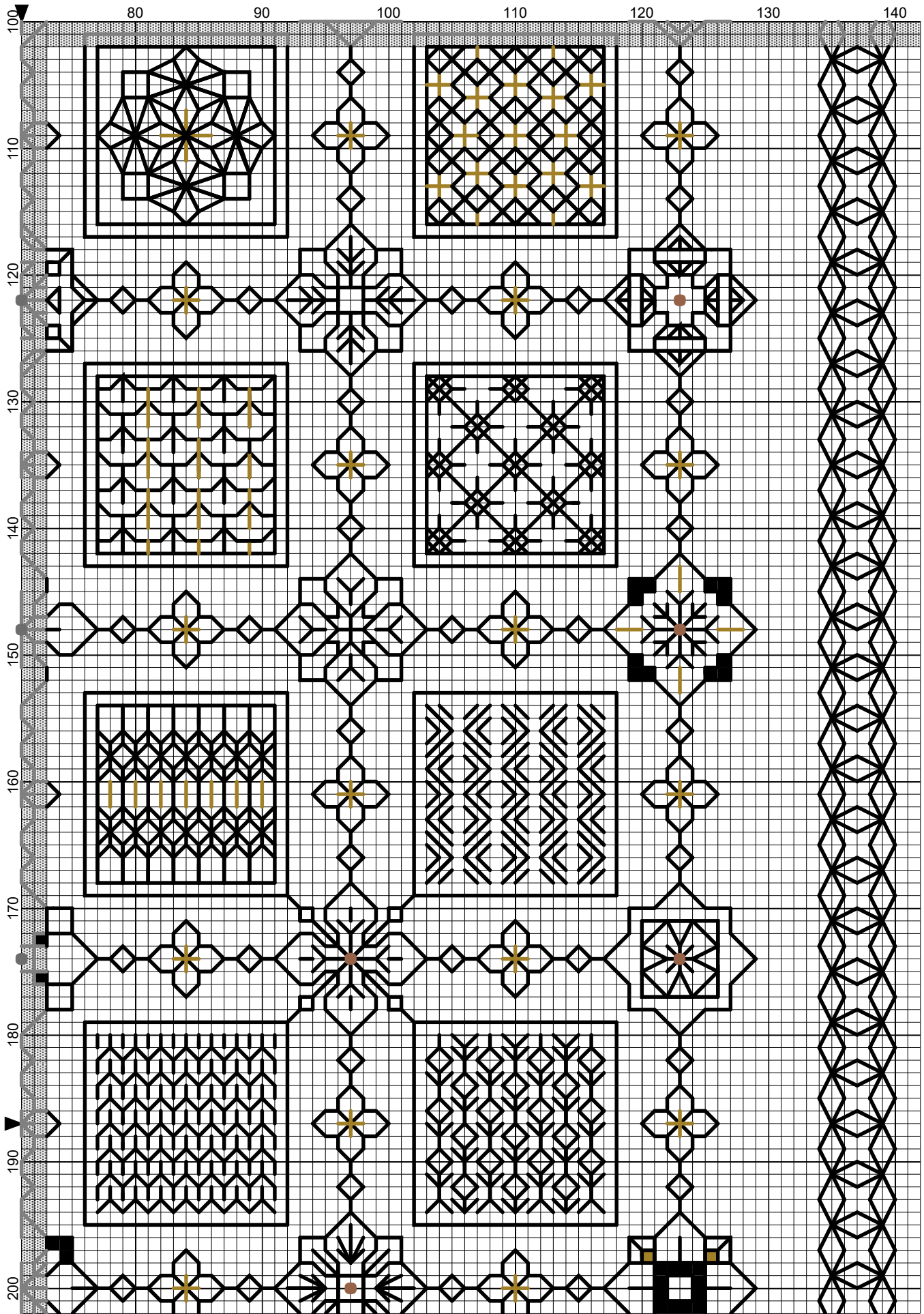
I hope you enjoy Part 4. If you have any queries please contact:
lizalmond@blackworkjourney.co.uk

Tiny Treasures Rectangular Colour Panel



Elizabeth Almond

Tiny Treasures Rectangular Black Panel



Elizabeth Almond

Mini Samplers

Take your favourite squares and floral motifs to create a series of mini samplers. Use just one colour, variegated threads or a range of colours. Each one will be different!

Design size: 6.14 x 7.86 inches, 86 x 110 stitches

Material:

Zweigart 28 count evenweave, or 14 count Aida 10 x 12 inches

Tapestry needle No 24, Small embroidery ring

Mill Hill glass beads – colour to suit sampler

Threads: DMC 909 emerald, 906 parrot green, 796 royal blue, DMC Light Effects - E3852 Dark Gold

Stitches used:

Back stitch - one strand, Cross stitch - two strands, Eyelet stitch - one strand

Method:

Edge the fabric to prevent fraying. Fold the fabric into four quarters to find the centre point. Mount the embroidery in the ring so that the fabric is 'drum' tight.

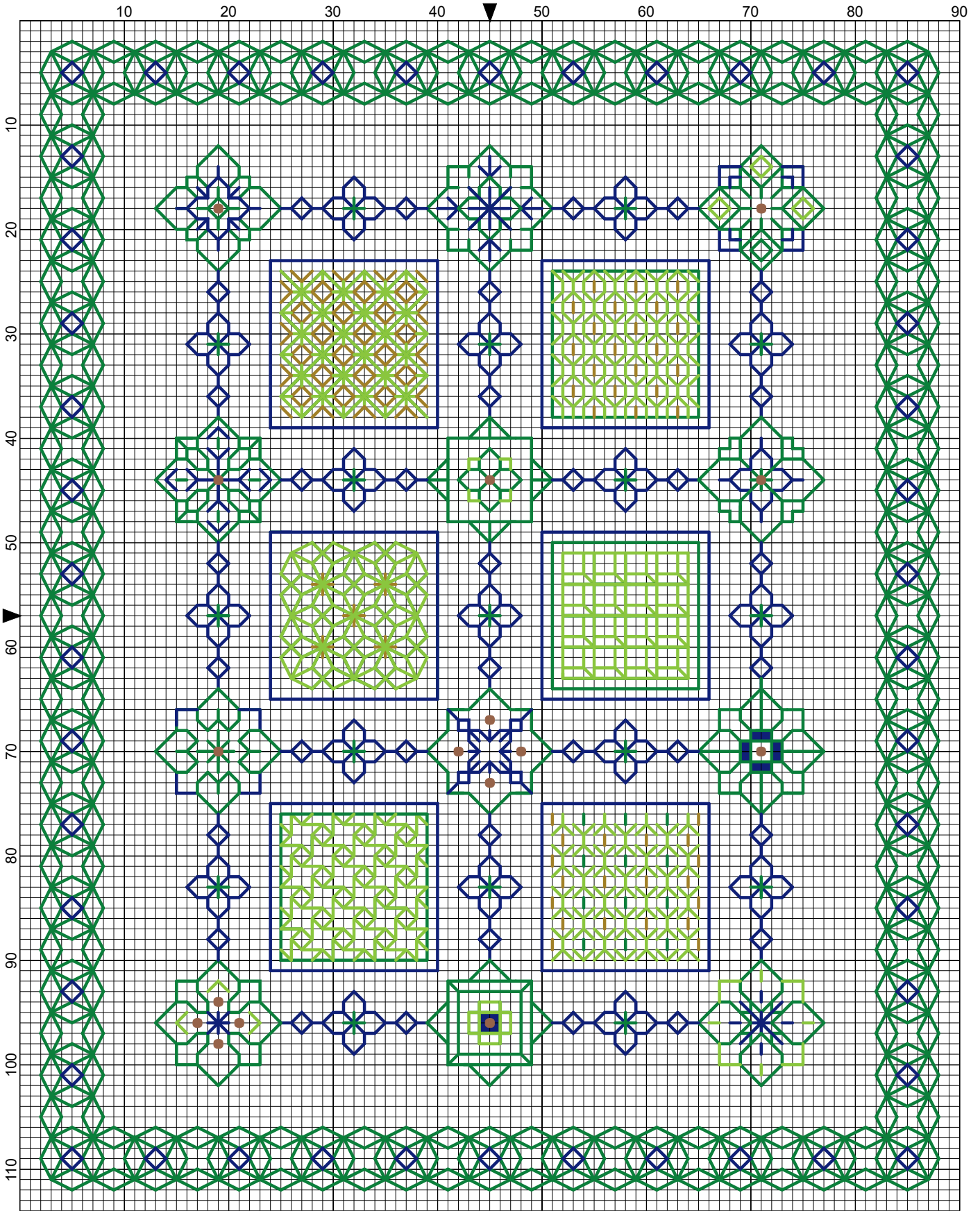
1. Work the flower motifs and links first.
2. Work the fillers in turn using the colours selected. Work the border in one strand of floss. Add the beads after the embroidery has been completed.
3. Place the finished embroidery face down on a soft towel and press lightly.



Elizabeth Strangeways Mini Samplers

I hope you enjoy working this design as much as I have enjoyed creating it. If you have any queries please contact: lizalmond@blackworkjourney.co.uk

Mini Sampler



Elizabeth Almond